

ACRYLITE® Signage Solutions

For over 45 years, Roehm America LLC has been offering the highest quality acrylic products for the sign industry. Our branded ACRYLITE® acrylic sheet offers outstanding optical clarity, superior impact strength, weather resistance and consistent performance. ACRYLITE® acrylic is available in several grades and colors, fit for your unique signage needs.

ACRYLITE® LED sign grade



- Lightweight and high optical quality with ~20x greater impact strength than standard acrylic sheet
- Outstanding ease of fabrication. Resists chipping and melting
- Withstands most outdoor conditions for many years without significant deterioration of clarity, color or physical properties
- 30-Year warranties on ORA45, ORA65, WRT30 and WRT31



ACRYLITE® LED sign grade reels



- Features all the benefits of ACRYLITE® LED sign grade acrylic sheet
- Allows optimization of material for unique sign sizes
- Perfect for channel lettering, flat and pan faced signs as well as vacuum formed letter applications



ACRYLITE® LED sign grade chrome



- Impact modified acrylic sheet with a thermoformable chrome surface
- Excellent weatherability for outdoor signage such as dealership signs
- Optimized for use with LEDs and other light sources



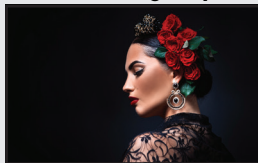
ACRYLITE® LED diffused sign grade



- Its frosted texture guarantees even light diffusion, eliminates hot spots, and offers excellent light transmission
- Specially formulated to combat outdoor elements without yellowing while maintaining its impact strength for many years



ACRYLITE® digital print



- Crystal-clear acrylic sheet with enhanced ink adhesion properties designed for printing with UV-curable inks
- Eliminates the need for primers and adhesion promoters
- Unique masking reduces static and increases quality control
- Available with a non-glare or markerboard surface



ACRYLITE® Signage Solutions

**ACRYLITE® LED
color changing back lit**



- Appears dark when unlit and when illuminated, will evenly emit in the color of the LEDs, whether white or RGB
- Superior diffusion hides LED hot spots when backlit at minimal distances
- Also known as black / white acrylic



**ACRYLITE® LED
optimized letter block**



- Specially formulated cast sheet developed for backlighting with embedded LEDs
- Brilliant and extremely weather-stable whiteness to provide decades of service
- Can be used with vinyl for custom colors and styles



**ACRYLITE® LED
light guiding edge lit**



- Ideal material for evenly illuminating a transparent surface with LEDs; no surface structuring, etching or printing needed
- Eliminates the need to recess signage into building walls, saving considerable construction costs and installation time
- Surface glows in the same color as the chosen LED



ACRYLITE® POP Touch



- Textured matte finish suitable for non-glare ADA signage
- Surface hides fingerprints and scratches for enhanced service life



ACRYLITE® Satinice



- Available with a matte satin surface on one or both sides or with diffuser beads evenly distributed throughout the material
- Developed to have the perfect balance between transmission and diffusion
- Resistant to traces of wear and fingerprints



Roehm America LLC
Acrylic Products
1796 Main Street
Sanford, ME 04073
USA

www.acrylite.co
www.roehm.com

1-855-202-7467
info@acrylite.co

Röhm GmbH and its affiliates are a worldwide manufacturer of PMMA products sold under the PLEXIGLAS® trademark on the European, Asian, African and Australian continents and under the ACRYLITE® trademark in the Americas.